

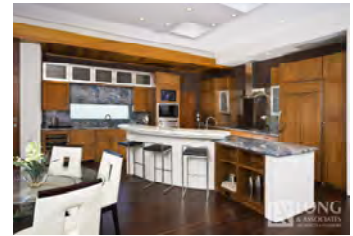
4/28/2010 FOR IMMEDIATE RELEASE:

Local Architect Awarded LEED Gold Rating for Green Home in Kahala

This new Kahala Avenue home was recently awarded LEED's Gold Certification, and is one of only a handful of "LEED for Homes" certified projects on Oahu. LEED Gold is a standard of excellence that measures and values the numerous "green" qualities that were professionally and aesthetically incorporated into this one of a kind home by the team at **Long & Associates Architects and Interiors**.



A Design-Build project, this home answers a need for efficient, yet beautiful homes for Hawaii's contemporary sustainable lifestyle and illustrates a new generation of Eco-conscious homes in the islands. The design is also the firm's first of a green Signature Series, and is a tool to showcase and educate clients and the community about what is possible with a LEED design.



LEED Homes must meet diverse criteria for water use reduction, energy efficiency, indoor environmental air quality, recycled and renewable material selection, as well as responsible land usage and construction practices. This home achieves all this in a thoughtful design package, offering the Hawaii real estate market a new twist on the contemporary aesthetic.

Long & Associates remains a leader in luxury LEED Homes throughout the islands and is available for consultation on LEED projects. See the design firsthand at special open houses for Golden Week; Saturday 5/2 from 10am-1pm or Sunday 5/2 from 1pm-5pm, or by appointment by contacting 808.521.1467.

SUSTAINABLE FEATURES:

- The home was designed on a **previously developed lot**, tied to existing infrastructure. Rather than demolishing the existing residence and sending the waste to a landfill, the home was deconstructed and donated to the salvage team at **Re-Use Hawaii**.
- Site sustainable practices during and after construction included a **tree preservation plan**, a permanent **erosion control plan**, a lot plan that keeps 95% of runoff water onsite, the use of non-toxic pest control alternatives, and the use of high-albedo materials in the roof and paving to reduce heat-gain everywhere on the property.
- A **20-Panel Photovoltaic system** on the roof generates approximately 4.6 kilowatts per hour and solar domestic hot water unit further reduces energy consumption.
- All the appliances in the home are **Energy Star rated**, including the washer and dryer, televisions and ceiling fans (which also promote circulations and indoor air quality).
- **High efficiency** spray foam insulation and double pane efficient windows keep the home cool and lowers air conditioning demands. All ducts are tested for leaks to ensure the home is thoroughly insulated. Within the ducts, high grade filters trap airborne germs, toxins and allergens.
- **Natural and non-toxic** finishes and materials were selected, including low-VOC paints, bamboo floors and recycled window frames. Natural daylighting is also us
- **Renewable woods** were used for the flooring, soffit details, and cabinets. An exercise in **creative reuse**, custom artwork was made from scraps of the exterior cedar planks.
- Dual flush toilets and low flow fixtures **reduce indoor water consumption**. Soy-based synthetic turf putting green and outdoor shower area, plus native and drought tolerant plants, significantly reduce landscaping water use.
- **Natural daylighting** is used at every opportunity, with skylights and textured glass details throughout the home.
- The home has already been opened to school children, college students, design professionals, and the community to **encourage discussion** on green design practices.

CONTACT:

Caty Byerly, LEED AP
inquiries@lai-hawaii.com

For more information, contact Long & Associates at 808-521-1467 or visit www.lai-hawaii.com to see other projects.

Brokered by: Patricia Choi of Choi International 808-734-7711 / hawaii@choi-realty.com